

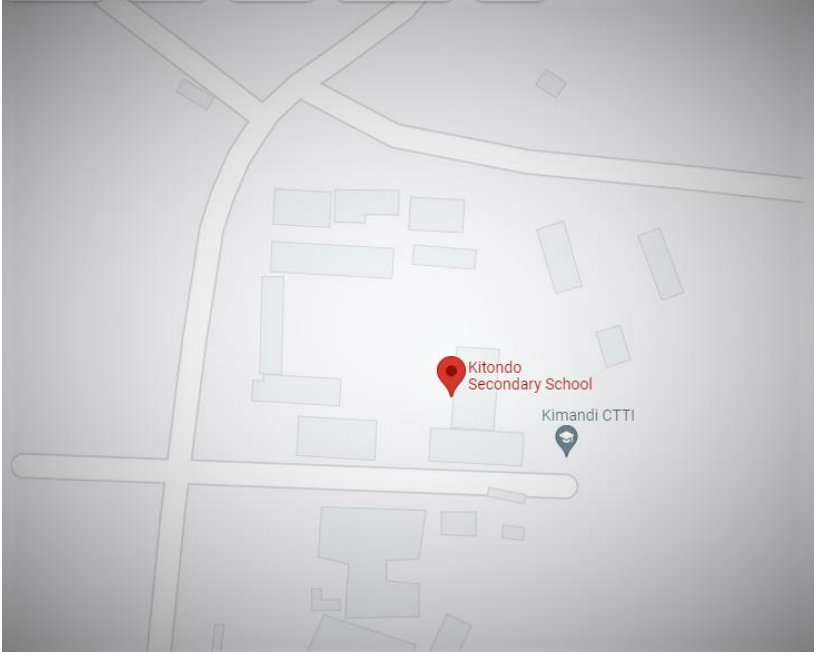
An aerial architectural rendering of the Kitondo School masterplan. The image shows a large, modern school complex with multiple buildings featuring flat and gabled roofs in shades of grey and red. The buildings are interspersed with green lawns, trees, and paved walkways. A central entrance gate is visible, with a sign that reads "KITONDO SCHOOL". A yellow car is parked on a road in the foreground. The background shows a dense forest and a clear sky.

Arch. Adamson Kyalo

# KITONDO SCHOOL MASTERPLAN PRESENTATION

*"We shape our buildings;  
thereafter they shape us"* –  
Winston Churchill





# Location

Google maps

# 1.Lack of a masterplan

The lack of a masterplan is the missing link between where the school is currently and the next step .

It's in lieu of the above that the school leadership has tasked the designer to create a school masterplan in consideration with the existing but more importantly create value for the future.

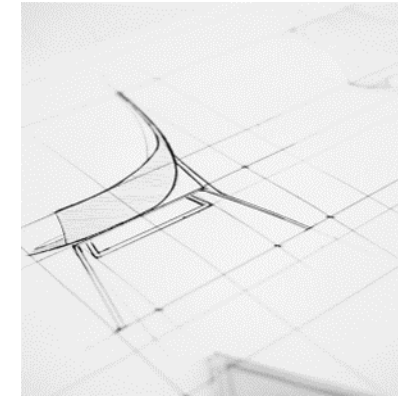
# 2.Incoherent Architectural Language.

There is no distinctive civic frontage, a strong historic style or sense of sporting / academic tradition exhibited by the existing facilities.

Legacy of mis-matched architectural building styles, with no coherent narrative for learning.

# 3.Circulation

Hard to navigate to and through eclectic and outdated buildings and external areas



# The Gap

The designer has identified the following major gaps in the existing facilities.

Site Plan as existing







# The Proposed Masterplan

The future





# Masterplan Planning Principles



## Pedagogy, The student & Place

Focuses on student behavior and inter & extra relations.



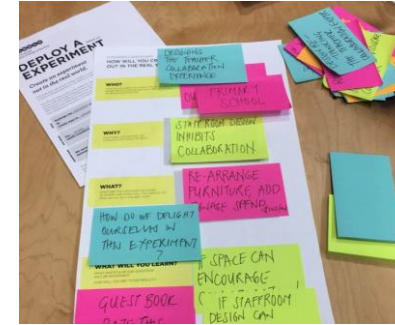
## The future

The purpose of master planning is to look to the future of the school in the context of it's history, culture and values. It establishes the guidelines by which to create a campus of learning that will endure for decades to come.



## Sustainability

A successful master plan is more than a tool to improve the physical condition of the school – it is a vehicle by which you can envision a sustainable future for teaching and learning at the school.



## Innovative

Innovative at the right places.



## Budget

Most schools have a limited budget but the danger for school leaders is that hard-won funding is wasted on a design intervention that fails to achieve the school's long-term objectives



# Proposed Masterplan



## key

1. Gate House
2. Administration
3. Library
4. Tuition Block
5. Multipurpose Hall
6. Dining
7. Kitchen
8. Student Accommodation
9. Hockey pitch
10. Football pitch
11. Swimming pool complex
12. Chapel
13. Support staff Housing
14. Car Parking
15. Power Rm
16. Workshop
17. Garage
18. Teaching Staff Quarters
19. Shamba
20. Bio-digester



# Academic Block

Modular spaces & furniture, lab-bench modules and standardized classroom and laboratory spaces allow for maximum space flexibility and growth. Multi-use spaces, such as huddle rooms, maximize the use of support spaces throughout the day as students, staff, and faculty share time in each space..



The square

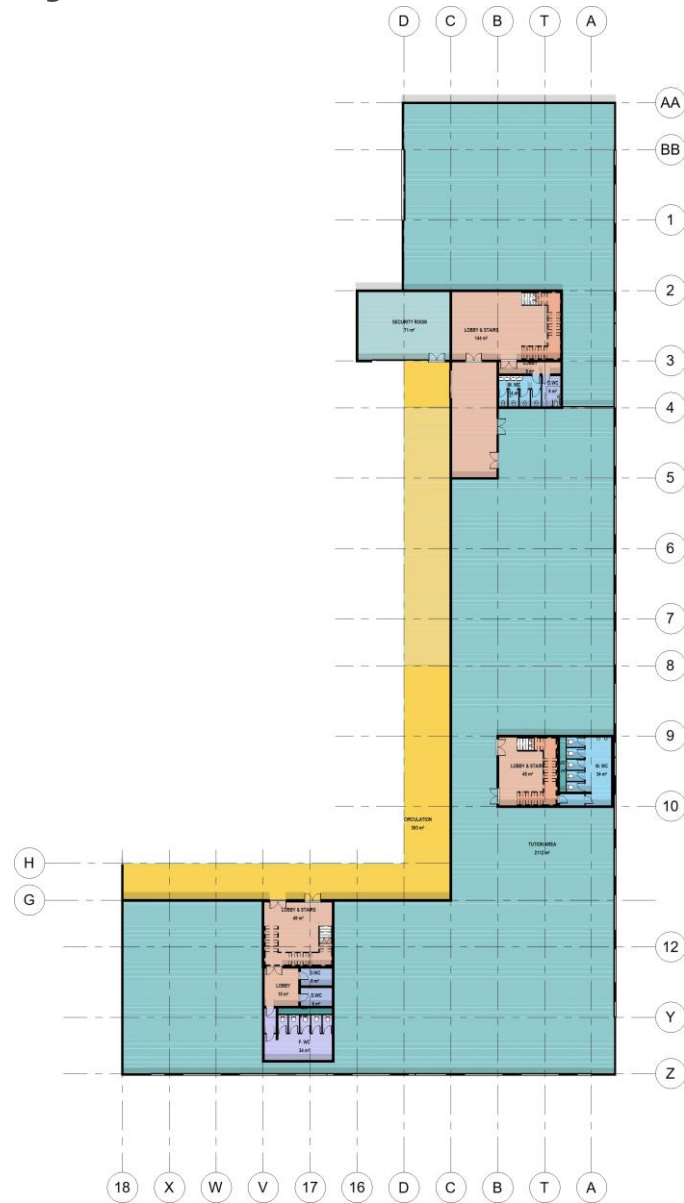
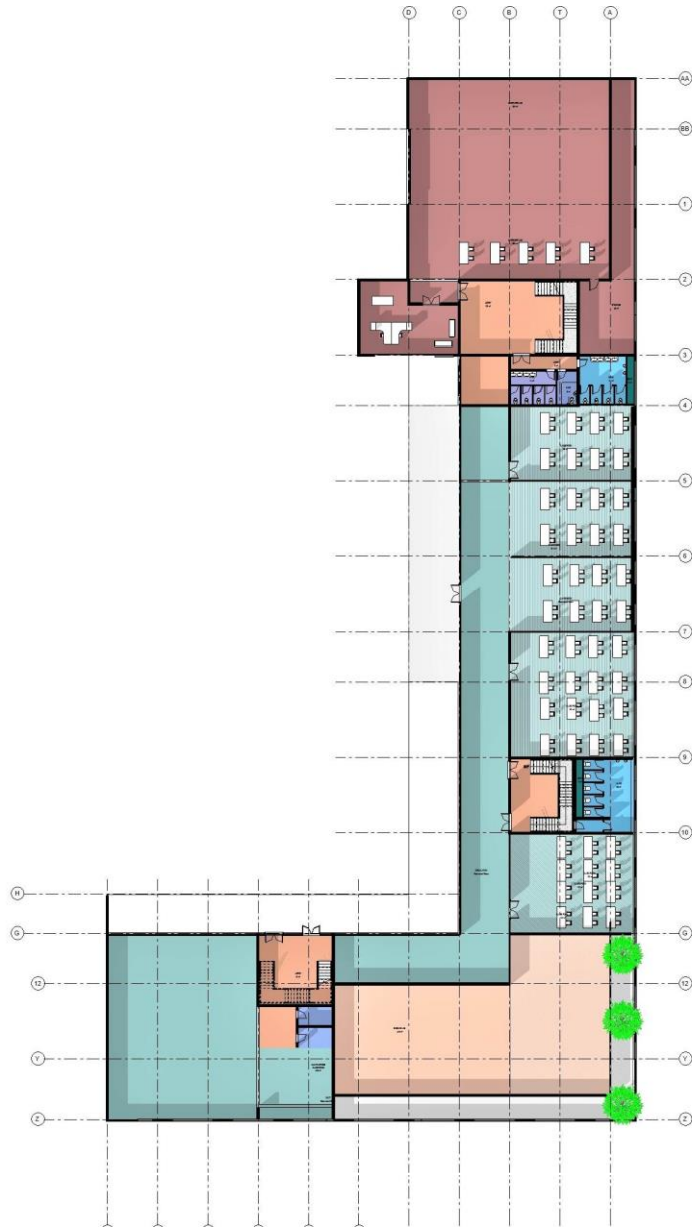
Circulation

Interconnectivity

To enhance student success, the re-vamped academic block focuses on inter-personal connection amongst students and faculty. The innovative class, library and laboratory designs enable instructors to engage with the full class while enhancing the individual hands-on learning that is critical for student success. Throughout the building, collaborative spaces allow student-teacher interaction as well as peer to peer learning and collaboration.



# Layout Plans





# Admin & Library





# Tution Block

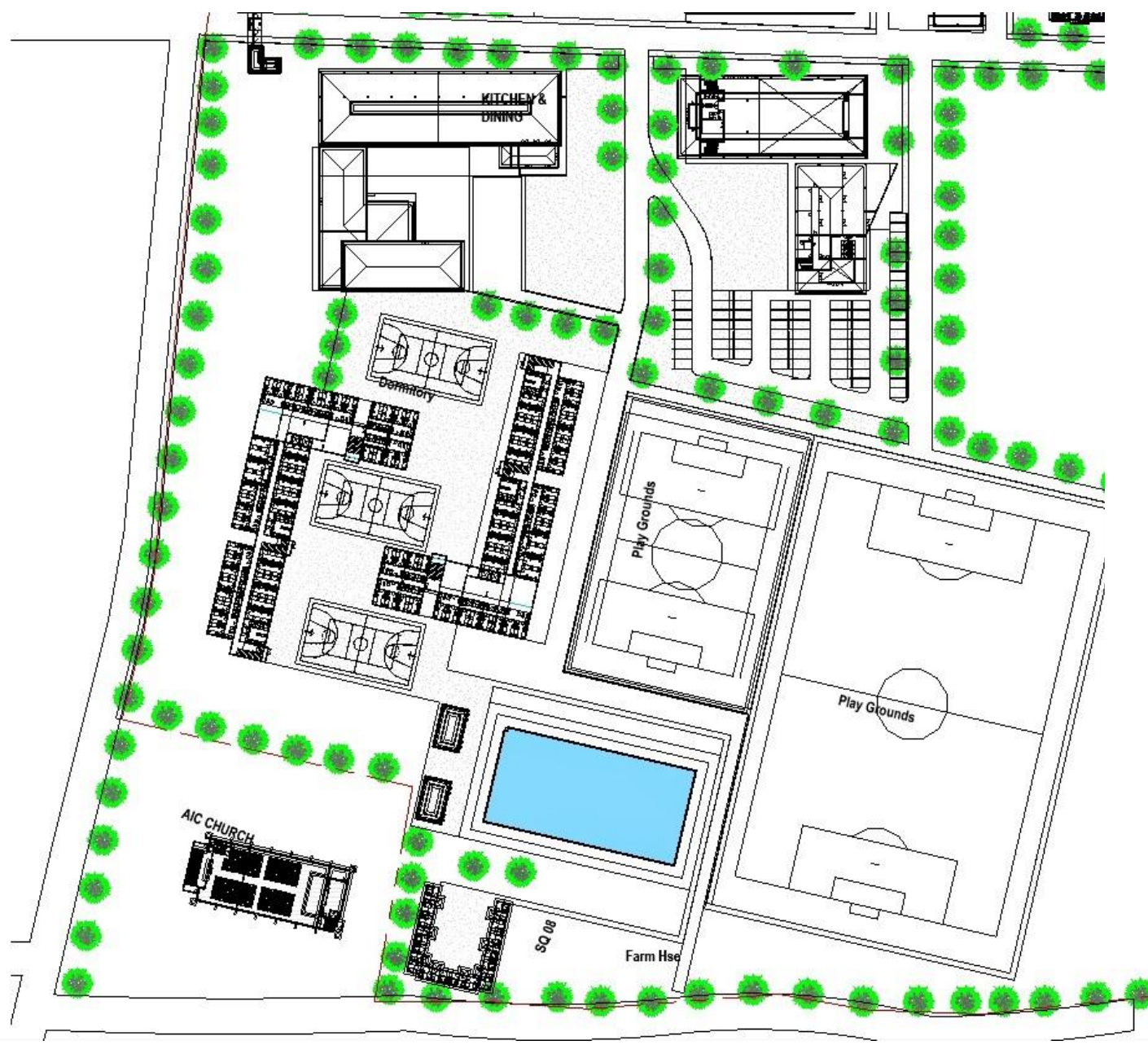




# Academic block entrance







# Support Facilities

# Student accommodation

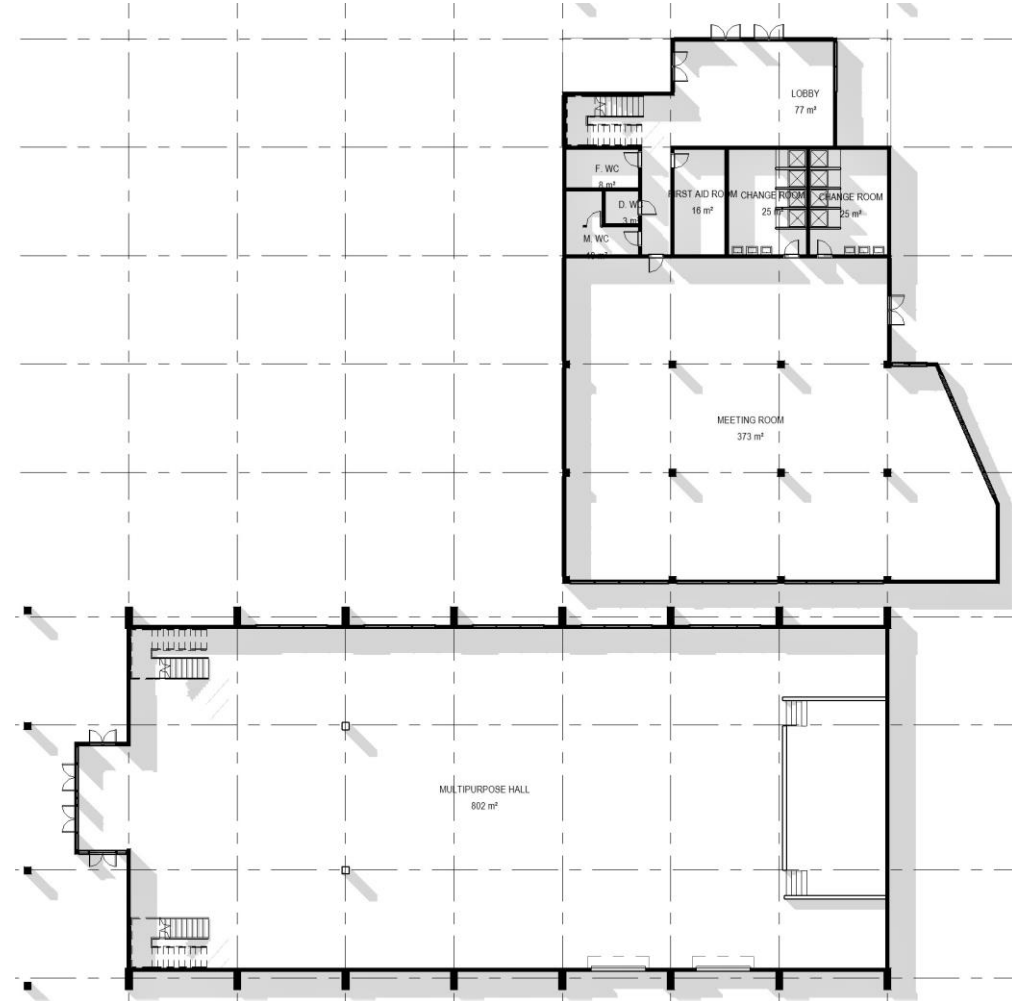
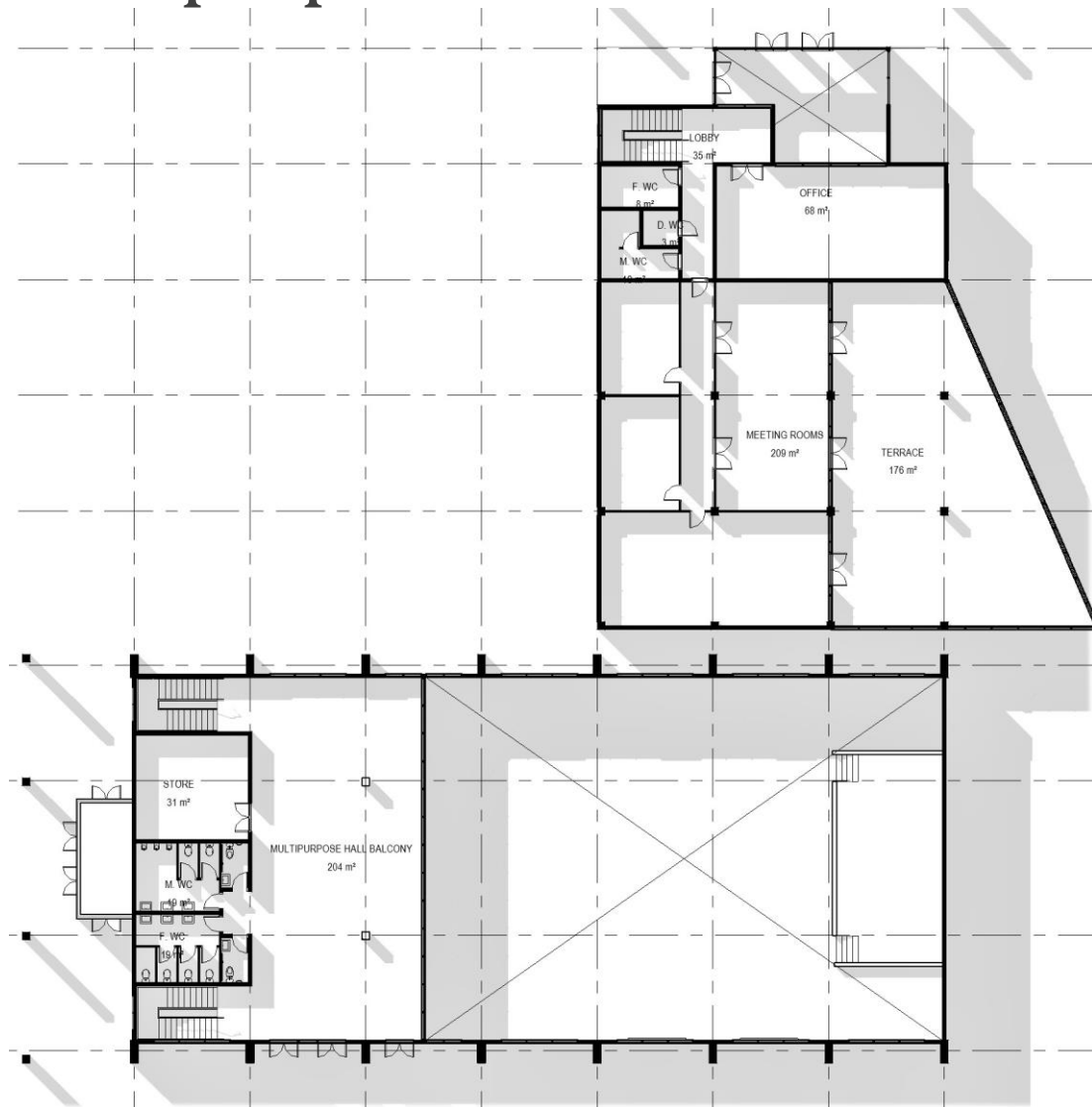




# Student accommodation



# Multi-purpose Hall



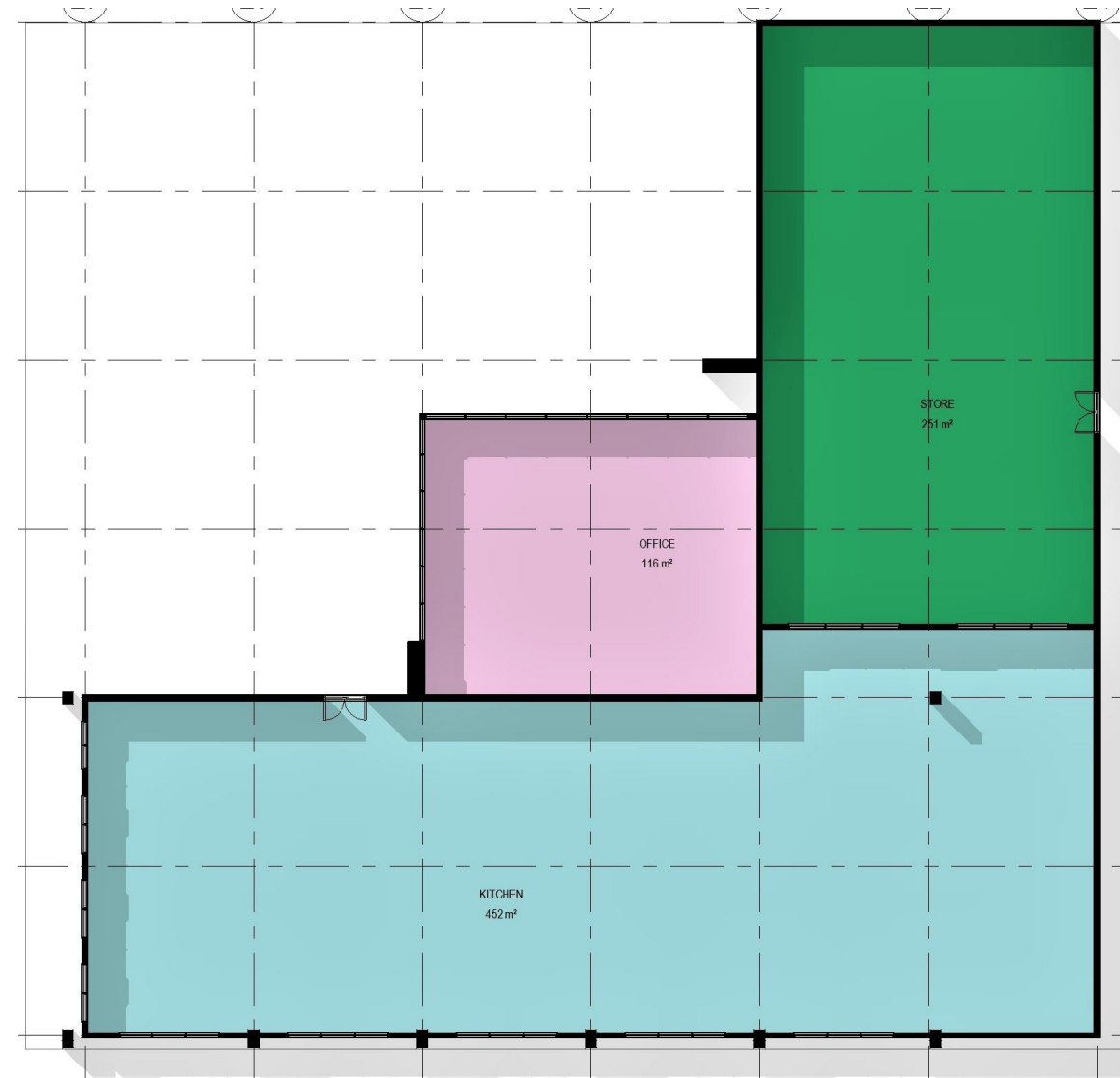
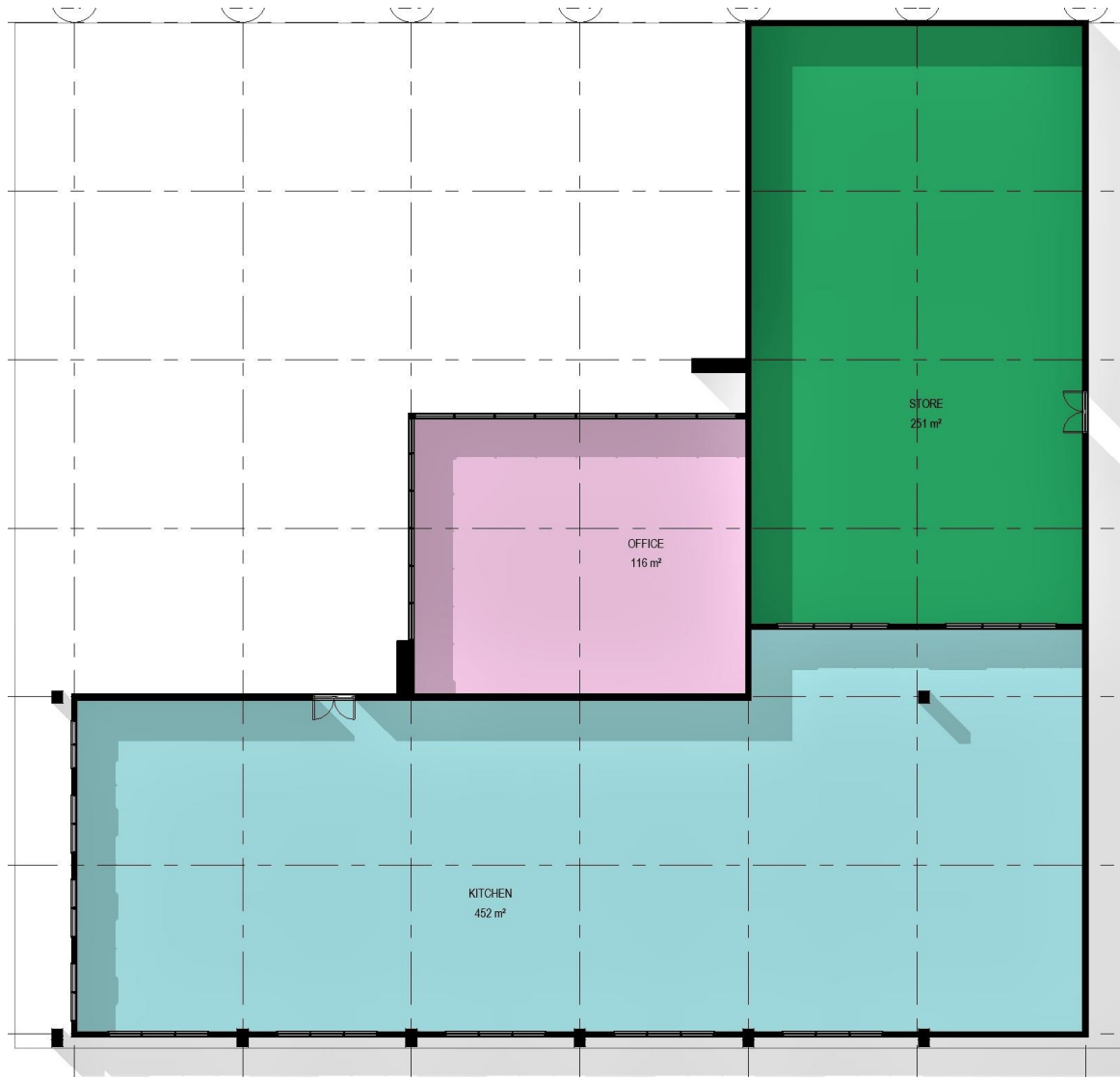


# Multi-purpose Hall





# Kitchen & Dining





# Kitchen & Dining





# Convenience Store





# Play Grounds



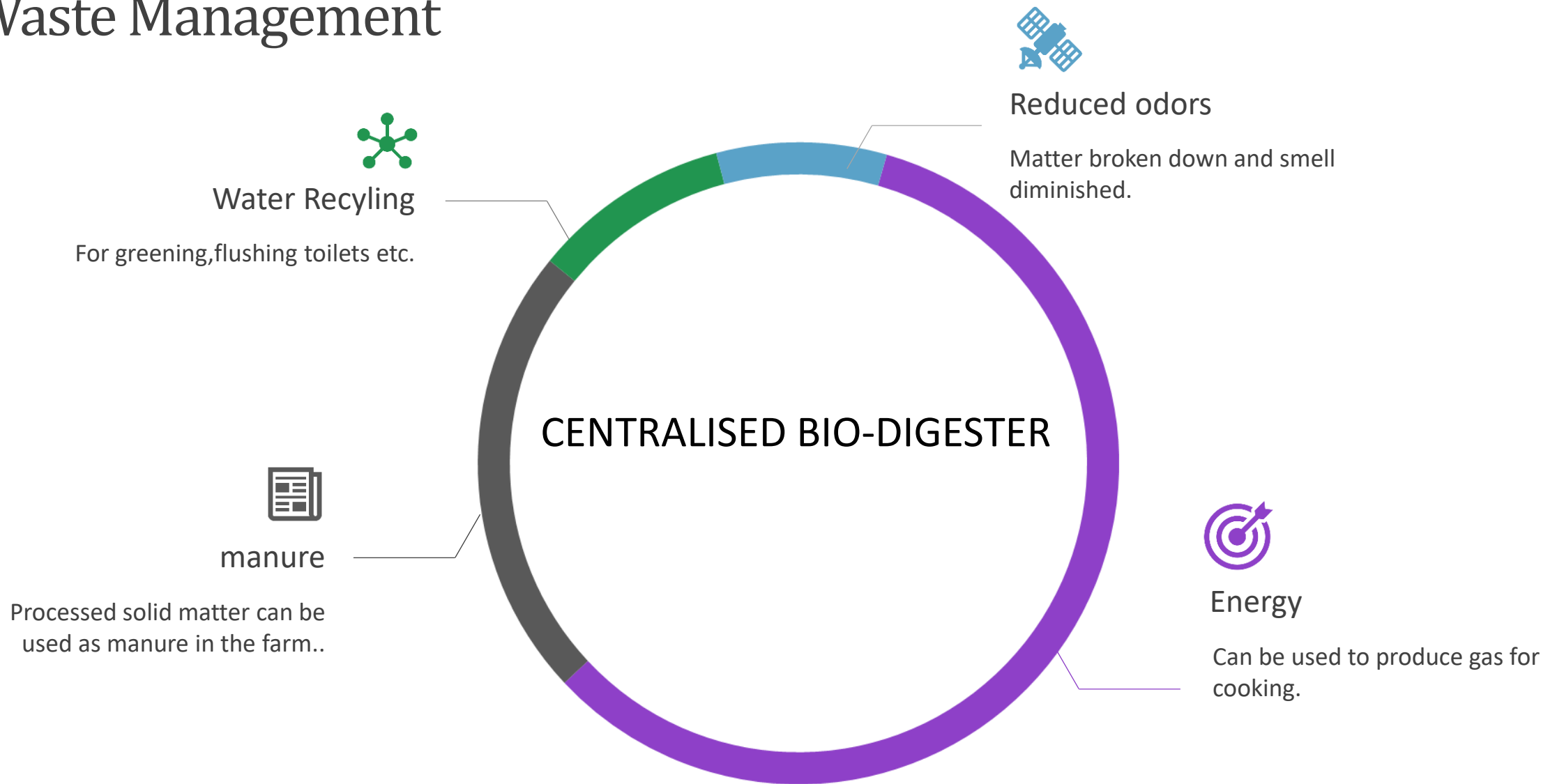


# Staff Housing





# Waste Management





Contoso Ltd.

# Thank You

 Arch adamson Kyalo

 +254 724975460

 kyaloadamson@gmail.com

